

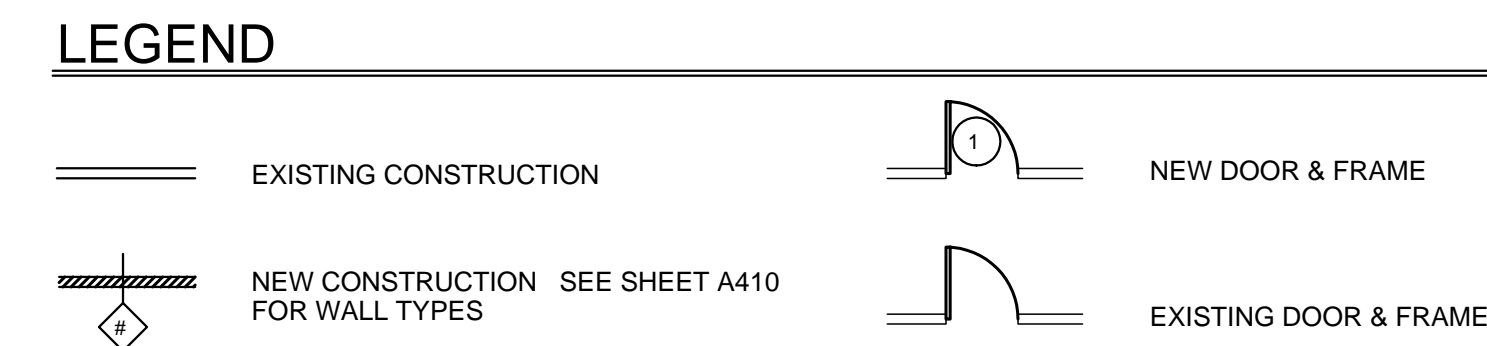
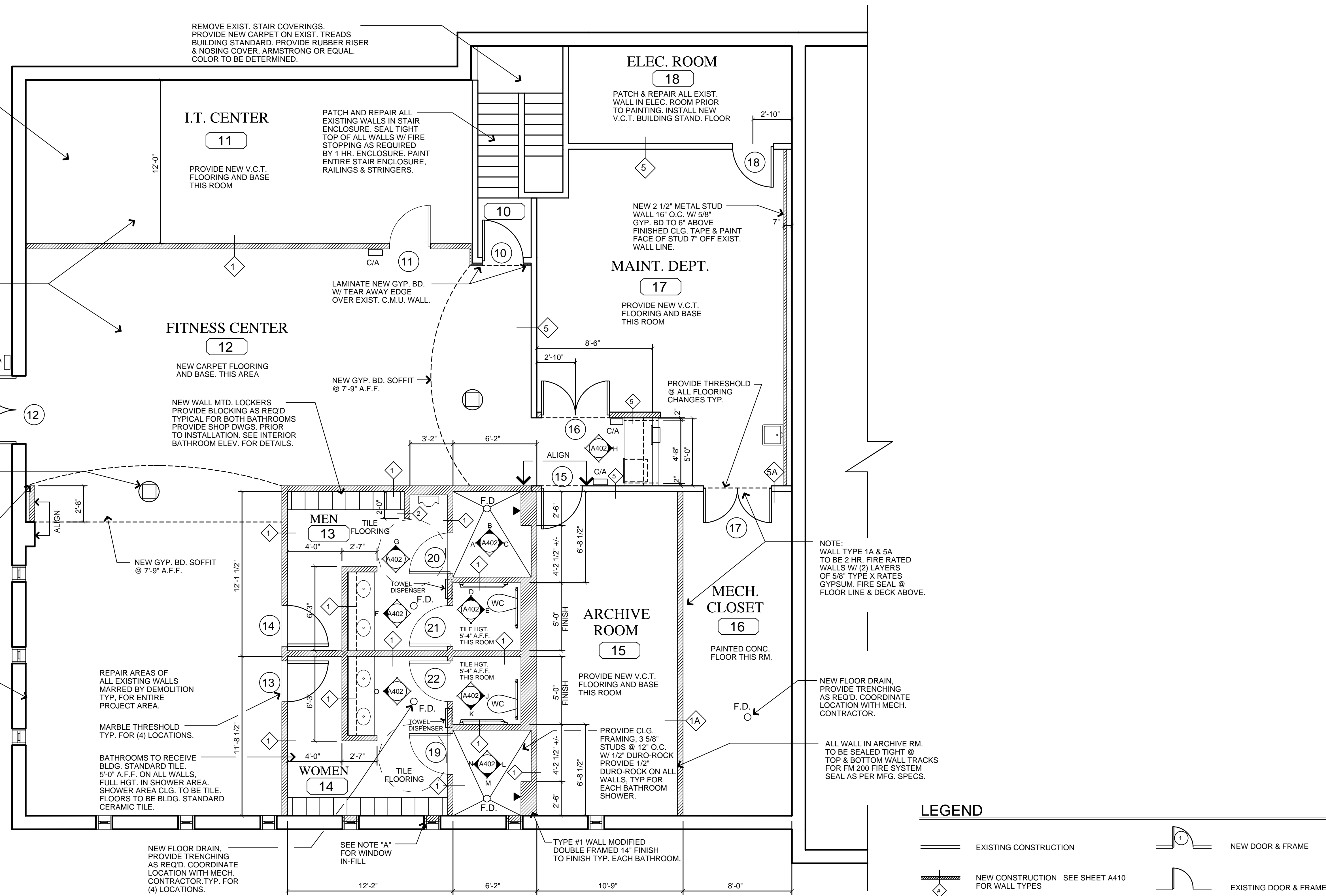
Date:	12-20-07	Drawn By:	HS
Scale:	AS NOTED	Approved By:	
Job No:	07/042	CAD Ref:	biodelsawmldb

LOWER LEVEL
CONSTRUCTION
PLAN

COPYRIGHT:
 H & R Design expressly reserves the common law copyright and other property rights in these plans. These plans are not to be reproduced in any form or manner, nor are they to be assigned to any third party, without first obtaining the expressed written permission and consent of the office of H & R Design. Drawings shall not be sealed for dimensions. Any discrepancies found in these plans, dimensions, existing conditions or any apparent error in classifying or specifying any product material or method of assembly is to be pointed out to the architect immediately.

Revisions:
 REVISOR: [Signature]
 DATE: 19, 20, 21, & 22

Drawing Number:
A101.1

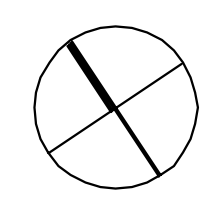


MARK	DOOR SIZE	TYPE	FIN.	FRAME	FIN.	JAMB	FIRE RATING	HARDWARE	REMARKS
(10)	3'-0" x 7'-0" x 1 3/4"	4	POLY	EXIST.	PT.	EXIST.	1 HR.	NEW PANIC BAR & CLOSURE	5'x20" VISION PANEL
(11)	3'-0" x 7'-0" x 1 3/4"	3	I	2	I	1	---	CLOSURE, ELEC. STRIKE, LOCKSET	CARD ACCESS DROP SEAL
(12)	EXISTING	---	---	---	---	---	---	NEW PANIC BAR & CLOSER	CARD ACCESS RETRO-FIT
(13)	3'-0" x 7'-0" x 1 3/4"	3	POLY	2	PT.	1	---	PUSH / PULL / CLOSURE / KICKPLATES 8'x34"	CYLINDER LOCK & SIGNAGE
(14)	3'-0" x 7'-0" x 1 3/4"	3	---	2	---	1	---	PUSH / PULL / CLOSURE / KICKPLATES 8'x34"	CYLINDER LOCK & SIGNAGE
(15)	3'-0" x 7'-0" x 1 3/4"	3	---	2	---	1	---	CLOSURE DROP SEAL LOCKSET	CARD ACCESS
(16)	(2) 2'-6" x 7'-0" x 1 3/4"	6	---	4	---	1	---	CLOSURES, HEAD / FOOT BOLT ON INACTIVE DOOR ELECTRIC STRIKE LOCKSET	CARD ACCESS
(17)	(2) 2'-6" x 7'-0" x 1 3/4"	6	---	4	---	1	---	CLOSURES, HEAD / FOOT BOLT ON INACTIVE DOOR LOCKSET / DROP SEAL, ASTRIGAL ON ACTIVE	
(18)	3'-0" x 7'-0" x 1 3/4"	3	---	2	---	1	---	CLOSURE LOCKSET	
(19)	3'-0" x 7'-0" x 3/8"	CUST.	GLASS	---	ALUM.	---	---	PRIVACY LATCH & LOCKSET	VERIFY FINISHED OPENING PRIOR TO FABRICATION OF GLASS DOOR UNIT.
(20)	3'-0" x 7'-0" x 3/8"	CUST.	GLASS	---	ALUM.	---	---	PRIVACY LATCH & LOCKSET	VERIFY FINISHED OPENING PRIOR TO FABRICATION OF GLASS DOOR UNIT.
(21)	3'-0" x 7'-0" x 1 3/4"	3	POLY	2	PT.	1	---	PRIVACY LOCKSET	WATER REPELANT SEALER ENTIRE DOOR TOP & BOTTOM. S.S. KICKPLATE 8'x34"
(22)	3'-0" x 7'-0" x 1 3/4"	3	POLY	2	PT.	1	---	PRIVACY LOCKSET	WATER REPELANT SEALER ENTIRE DOOR TOP & BOTTOM. S.S. KICKPLATE 8'x34"

NOTE: ALL DOORS TO RECEIVE LEVER TYPE HARDWARE WITH BRUSHED CHROME FINISH 260 SCHLAGE 'D' SERIES RHODES D53PD OR APPROVED EQUAL U.O.N.
 PROVIDE THRESHOLDS AS REQUIRED AT ALL FLOORING CHANGES. PROVIDE ALL ADA SIGNAGE AS REQUIRED BY LOCAL & STATE CODES
 PROVIDE DOOR STOPS AT ALL SWINGING DOORS.
 CLOSERS TO BE LCN SMOOTHIE 4033 OR APPROVED EQUAL

1 LOWER LEVEL CONSTRUCTION PLAN
 SCALE: 1/4" = 1'-0"

APPROXIMATE BLDG. NORTH



NOTE: SEE DRAWING A502 FOR DOOR AND FRAME TYPES.