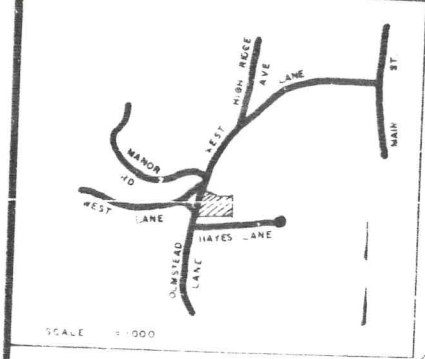
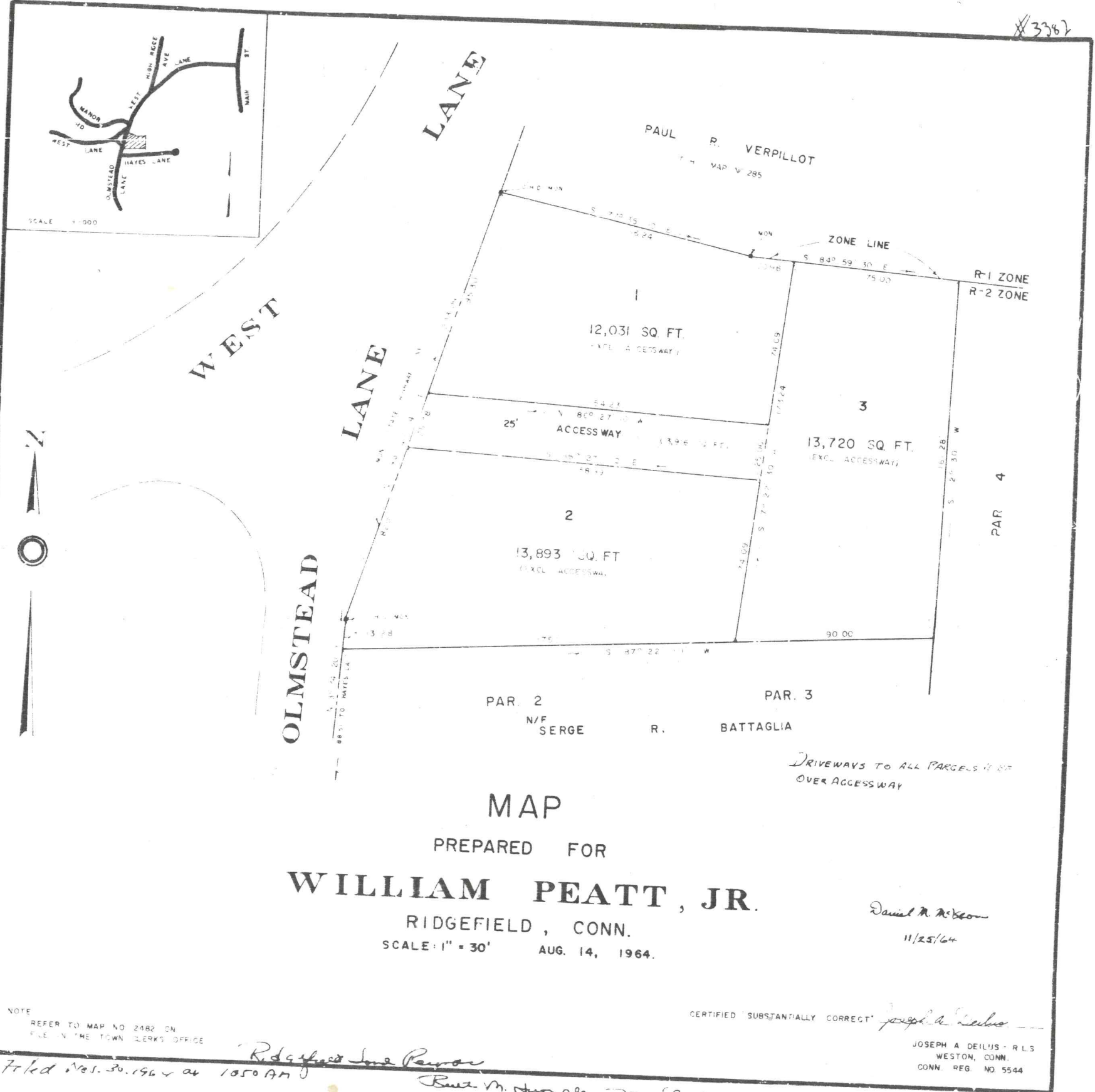


#3382



WEST LANE
OLMSTEAD LANE

PAUL R. VERPILLOT
MAP NO. 285

12,031 SQ. FT.
(EXCL. ACCESSWAY)

13,720 SQ. FT.
(EXCL. ACCESSWAY)

13,893 SQ. FT.
(EXCL. ACCESSWAY)

PAR. 2
N/F SERGE

PAR. 3

R. BATTAGLIA

R-1 ZONE
R-2 ZONE

PAR. 4

DRIVEWAYS TO ALL PARCELS ARE
OVER ACCESSWAY

MAP

PREPARED FOR

WILLIAM PEATT, JR.

RIDGEFIELD, CONN.

SCALE: 1" = 30' AUG. 14, 1964.

Daniel R. McKeon
11/25/64

NOTE
REFER TO MAP NO. 2482 ON
FILE IN THE TOWN CLERK'S OFFICE

CERTIFIED SUBSTANTIALLY CORRECT

JOSEPH A. DEILUS - R.L.S.
WESTON, CONN.
CONN. REG. NO. 5544

#3382 Filed Nov. 30, 1964 at 10:50 AM

Ridgefield Inset Payroll

Paul M. Hargrave Town Clerk